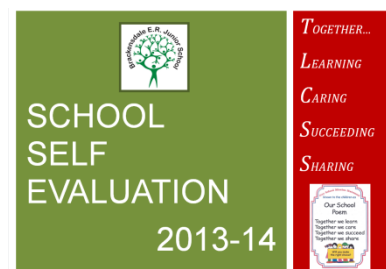


Additional information

This web page has been designed to give a more detailed insight to the school, with the proposed audiences being OFSTED, Department of Education and the Local Authority. As visits to our school can be often quite short, we thought this additional information would help to get a picture of the complex nature of our school. None of the information is confidential, so other visitors to our website are welcome to use it.

- To look at our School Self-Evaluation - click [here](#)

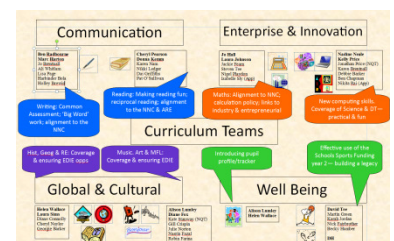


- To look at the key parts of our **School Development Plan** click on the sections below:

- [SDP overview](#)
- [Development priorities](#)
- [Action plan for development priority 1](#)
- [Action plan for development priority 2](#)
- [Action plan for development priority 3](#)
- [Action plan for development priority 4](#)



- To look at Governor development plan for this year click [here](#):
- We organise our staff into Curriculum teams rather than have separate Subject Leaders. This is to utilise the skills of our whole staff under the ethos of working TOGETHER. Each team is led by a key person(s). Each team has its own Action Plan. To see the Curriculum teams and the focus for this year, click [here](#):



- **Class organisation:** Due to the wide breadth of ability of our children we organise our classes by need and their stage of learning. This allows us to focus our support and teaching on the needs of each child with a level of differentiated challenge that would be impossible in mixed ability single aged classes. Click [here](#) to see the class organisation for 2014/15.
- **Prediction data 2015:** In addition to the data shared elsewhere on our website, we have our predictions for 2015. Click [here](#)